

CONCRETE MASONRY



Western Materials

STANDARD CONCRETE MASONRY UNITS

All dimensions are nominal. Actual dimensions are 3/8" less to allow for 3/8" mortar joint.

4 INCH

6 INCH

8 INCH

10 INCH

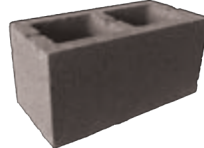
12 INCH



4x8x16
STANDARD



6x8x16
STANDARD



8x8x16
STANDARD



10x8x16
STANDARD



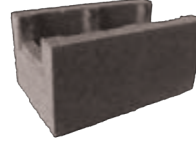
12x8x16
STANDARD



6x8x16
BOND BEAM



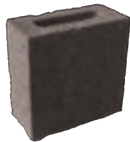
8x8x16
BOND BEAM



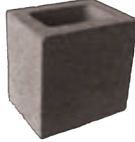
10x8x16
BOND BEAM



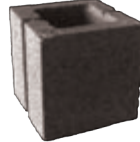
12x8x16
BOND BEAM



4x8x8
1/2 BLOCK



6x8x8
1/2 BLOCK



8x8x8
1/2 BLOCK



10x8x8
1/2 BLOCK



12x8x8
1/2 BLOCK



4x4x16
1/2 HIGH



6x4x16
1/2 HIGH



8x4x16
1/2 HIGH



12x4x16
1/2 HIGH



4x8x16
CORNER RETURN



6x8x16
CORNER RETURN



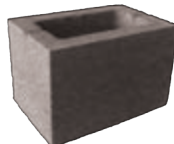
8x8x16
SOLID BOTTOM BOND BEAM



12x8x16
SOLID BOTTOM BOND BEAM



6x8x12
3/4 BLOCK



8x8x12
3/4 BLOCK

CONCRETE MASONRY UNIT RECOMMENDED SPECIFICATION: All concrete masonry units shall comply with ASTM C-90-06. Units shall be medium weight, manufactured with a blend of aggregates conforming to ASTM C-33 and C-331. All masonry units stored on the job site should be kept off the ground and protected from the elements.

SPECIAL CONCRETE MASONRY UNITS

Colors are available by special order. Please consult with our sales representative.



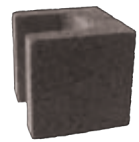
SINGLE BULLNOSE



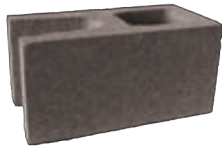
DOUBLE BULLNOSE



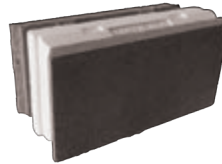
LINTEL



1/2 LINTEL



OPEN END



HI-R



KORFIL

AVAILABLE SIZES

	4"		6"			8"		10"		12"	
	STD.	1/2	STD.	1/2	CR.	STD.	1/2	STD.	1/2	STD.	1/2
SINGLE BULLNOSE*	●	●	●	●	●	●	●	●	●	●	●
DOUBLE BULLNOSE*	●	●	●	●		●	●	●	●	●	●
LINTEL			●			●		●		●	
1/2 LINTEL				●			●		●		●
OPEN END						●					
HI-R**						●		●		●	
KORFIL**						●		●		●	

STD. is 16" in length, 1/2 is 8" in length, and CR. is corner return. *Available in ground face
 **KORFIL & HI-R available in all smooth, split face texture and ground face textures. See back panel.



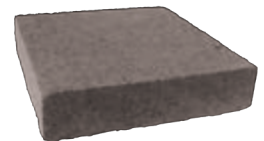
8x4x16
SOLID



8x2x16
PATIO



3.5x2.5x7.5
CONCRETE BRICK



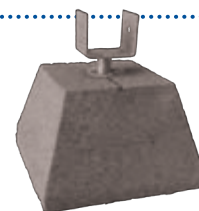
16x4x16
TRAILER PAD



12x8x12
PIER BLOCK



12x8x12
PIER POST



12x8x12
PIER W/ BRACKET

SMOOTH FACE



STANDARD



1 GRID



3 GRID



7 GRID

SPLIT FACE



STANDARD



1 GRID

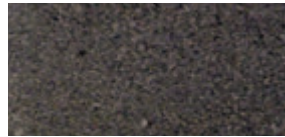


3 GRID



7 GRID

GROUND FACE



STANDARD

Smooth face, split face, and ground face treatments are available on all standard block sizes. All 4, 6, 8, 10, and 12 inch units are available in standard, bond beam, and 1/2 block.



Western Materials

YAKIMA

1202 S. First Street, Box 430
Yakima, WA 98907-0430

Phone: (509) 575-3000
Fax: (509) 575-3045

PASCO

317 S. Fifth, Box 452
Pasco, WA 99301-0452

Phone: (509) 547-3301
Fax: (509) 547-6770

WENATCHEE

5704 Nelpar Drive
Wenatchee, WA 98802

Phone: (509) 886-5182
Fax: (509) 886-5184

WWW.WESTERNMATERIALS.COM